

ENVIRONMENT AND LEISURE COMMITTEE	19 NOVEMBER 2020	AGENDA ITEM: 6(i)
--	-------------------------	--------------------------

Report prepared by Nicola Young – Deputy Town Clerk

RECREATION GROUND

UPDATE ON WORK IDENTIFIED IN THE ANNUAL PLAY INSPECTION REPORT

Purpose of Report

The purpose of this report is to update members of the Environment & Leisure Committee on the progress being made with work identified as a result of the Annual Play Inspection Report, following a report provided to Committee on 17 September 2020, Agenda Item 6(ii).

Detailed Information

At the last meeting of the committee, Members were provided with a copy of the Annual Play Inspection Report, which identified works required to replace some equipment at the play park at the recreation ground, along with some ground works and other works such as painting and fence repairs.

The Groundsman has kindly agreed to undertake some of the tasks within the cost of his agreed contract and quoted to undertake some of the fence repair and painting. These works have now been commenced with new bark being laid in the week commencing 9 November 2020.

The Deputy Clerk has been tasked with contacting the original supplier of the play equipment with a view to them providing advice on whether some of the equipment can be repaired to ensure it meets all relevant standards and also to consider which play equipment needs to be replaced and options for those replacements.

Following confirmation of the manufacturer of the majority of the play equipment, the Deputy Clerk prepared a specification for the work required (Attachment 1) and sent to the company via email, with a request that quotes be submitted by Friday, 14 November 2020 in time to be presented to the Environment & Leisure Committee. It is anticipated that once the committee has agreed options for the replacement equipment further quotes will need to be obtained from at least two other companies.

In the previous report the Clerk identified that the "Dome Climber" needs replacing in its entirety and the Committee are requested to consider what type of equipment could be installed in its place i.e. should this be a wooden climbing structure, a trampoline built into the ground, or replace the climbing dome like for like. Alternatively, the Committee could consider installing an all-inclusive piece of equipment, such as a wheelchair friendly roundabout.

The Chair of the Committee has been approached by a number of local residents who have made suggestions for replacement equipment for the play area and officers would suggest that Members consider a public consultation being undertaken to ascertain what parents and children would like to see in the play area.

The report provided to Committee on 17 September 2020 also identified the possibility of s.106 funds being available for replacement play equipment. The Deputy Clerk has sent several emails to the relevant Herefordshire Council Officer in respect of possible s.106 funding, but as yet no response has been received.

Recommendation

1. That Members of the Environment and Leisure Committee receive and note the specification which has been provided to the original supplier of the play equipment.
2. That Members give consideration to holding a consultation in respect of future play equipment, in particular a replacement for the Dome Climber, (page 25 of the Inspection Report provided with your September agenda)
3. That, should a decision be made not to hold a consultation, especially bearing in mind the current COVID-19 restrictions, that Members decide what piece of equipment should be installed to replace the Dome Climber.



Ledbury Town Council

Church Lane, Ledbury, Herefordshire HR8 1DH

Telephone: 01531 632306

Recreation Ground Repair or Replacement of Items Listed **SPECIFICATION**

Ledbury Town Council owns and manages Bye Street Recreation Ground and therefore, in accordance with Health & Safety Law, receives an annual inspection of play equipment.

In 2020 the Annual Inspection has brought to the attention of the Council several items of play equipment which need repair or wet pour that needs repairing or replacing.

The majority of play equipment that needs replacing is named as Manufacturer: Wicksteed, so, on behalf of the Council, I am therefore writing to seek a quote or be provided with prices to carry out the individual repairs as listed below.

There are also pieces of equipment that the manufacturer is Not Known. Therefore, I also write to ask Wicksteed to provide a price for each piece of equipment listed as Manufacturer Not Known, to either repair or replace the items as listed below.

If you have any queries about the request please do get in touch with:

Nicola Young
Deputy Clerk

Telephone: 01531 632306 Ext 208

Mobile: 07734 966928

Email: deputyclerk@ledburytowncouncil.gov.uk

Quoted prices are requested by 5pm on Friday 14th November 2020. If you are unable to meet this deadline please do contact the Deputy Clerk.

Ledbury Town Council – Bye Street Recreation Ground

Annual Inspection – request for quote for work

No.	Works required - Repair/Replace/Other	To be undertaken by	Materials/ equipment required	Anticipated Cost	Anticipated Completion date
2	Single point swing - to be assessed by manufacturer and repaired or replaced accordingly	Manufacturer			2021
3	Bay Cradle Swing - Repair and relay safety surface. Assess chains and bushes and replace if necessary	Specialist contractor	To be supplied by contractor		2021/22
4	Bay Mixed Swing - Repair and relay safety surface where necessary - Assess chains and ropes and replace if necessary	Specialist contractor	To be agreed with supplier		2021/22
6	Multiplay Slide - repair safety surface	Specialist Contractor	To be agreed supplier		2021/22
7	Aerial Runway (Zip wire) - Inspect main cable - Replace worn or missing nylon inserts, test seat height when loaded with 69.5 kg, adjust cable stop position, inspect seat connection, repair traveller brake	Specialist Contractor			2021/22
8	Helical Slide – to be assessed and repaired accordingly	Specialist Contractor	To be agreed supplier		2020/21
9	See Saw - Repair safety surface	Specialist Contractor	Contractor to provide		2021/22
12	3 way springer - repair damaged safety surface	Specialist Contractor	To be agreed supplier		2021/22

No. 2 Single Point Swing



Surfacing

Grass Mats

EN1176 Compliance: N/A

EN1177 Compliance: N/A

Manufacturer: Not Known

Comments:

1 Parts of the timber are rough or splintered

2 The item has missing component(s)

Recommendations:

1 Remove all rough or sharp edges

Risk Assessment: 2 x 3

2 Consider replacing missing components

Risk Assessment: 2 x 2

No 3. Bay Cradle Swing



Surfacing: Wet Pour
 EN1176 Compliance: No
 EN1177 Compliance: Yes
 Manufacturer: Wicksteed

Comments:

- 1 The chain openings are in excess of the maximum of 8.6mm recommended by BS EN 1176.
- 2 There is some chain wear
- 3 The surface is lifting at the edges and creating trip points
- 4 The paintwork on this item has been damaged or worn exposing the metal underneath which is rusting.

Recommendations:

1 Monitor use and replace with compliant chains during next maintenance cycle.

Risk Assessment: 1 x 5

2 Monitor for further deterioration and replace when 40% worn.

Risk Assessment: 2 x 3

3 Repair safety surface

Risk Assessment: 2 x 4

4 Treat any rusting components and repaint

Risk Assessment: 2 x 3



Comments:

5 The bushes are showing signs of wear

Recommendations:

5 Monitor for any further deterioration and repair as and when required.

Risk Assessment: 2 x 3

No. 4 2 Bay Mixed Swing



Surfacing: Wet Pour
 EN1176 Compliance: No
 EN1177 Compliance: Yes
 Manufacturer: Wicksteed

Comments:

- 1 The chain openings are in excess of the maximum of 8.6mm recommended by BS EN 1176.
- 2 There is some chain wear
- 3 The ropes are worn/damaged in places.
- 4 The safety surfacing is damaged.

Recommendations:

- 1 Monitor use and replace with compliant chains during next maintenance cycle.

Risk Assessment: 1 x 5

- 2 Monitor for further deterioration and replace when 40% worn.

Risk Assessment: 2 x 3

- 3 Monitor for any further deterioration and repair or replace as required.

Risk Assessment: 2 x 3

- 4 Repair damaged areas of surfacing

Risk Assessment: 2 x 4



Comments:

- 5 The paintwork on this item has been damaged or worn exposing the metal underneath which is rusting.

Recommendations:

- 5 Treat any rusting components and repaint.

Risk Assessment: 2 x 3

6. Multiplay Slide



Surfacing: Wet Pour

EN1176 Compliance: No

EN1177 Compliance: Yes

Manufacturer: Playworld

Comments:

1 There is/are finger entrapment(s) in the platform and the item fails to meet the requirements of BS EN 1176:2008 Part 1 4.2.7.6 Entrapment of Fingers.

2 The safety surface is damaged

3 There are gaps opening up at the edges of safety surface

Recommendations:

1 Monitor use 1 x 5

2 Repair the safety surface

Risk Assessment: 2 x 4

3 Repair the safety surface

Risk Assessment: 2 x 4

7. Aerial Runway



Surfacing: Grass Mats

EN1176 Compliance: No

EN1177 Compliance: Yes

Manufacturer: Not Known

Comments:

1 We recommend that the main cable is thoroughly inspected at least once every 2 years this; will involve either removing the cable or gaining access by ladders and/or steps to inspect for damage or internal rusting.

2 The nylon inserts are worn or missing at the point the cable enters the traveller

3 The height of the seat from ground level is less than 350mm when partially loaded

4 The seat is less than 2.0 metres from the post when extended at 45 degrees at the end of the area of travel

Recommendations:

1 Inspect the cable as per the manufacturer's recommendations

Risk Assessment: 2 x 4

2 Replace worn or missing inserts as required

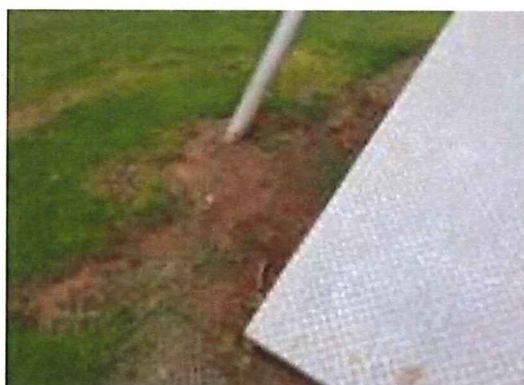
Risk Assessment: 2 x 3

3 Ensure the seat is a minimum of 350mm above ground level when loaded with 69.5kg

4 Adjust the cable stop position to ensure the minimum distance is maintained

Risk Assessment: 2 x 4

Aerial Runway continued/:-



Comments:

- 5 The seat connection cannot be inspected without dismantling the seat
- 6 The traveller brake is not working
- 7 The grass mats are silted up, the soil
- 8 The surface has eroded around the item

Recommendations:

- 5 Dismantle the seat to inspect the seat connection for wear

Risk Assessment: 2 x 4

- 6 repair the traveller brake

Risk Assessment: 2 x 4

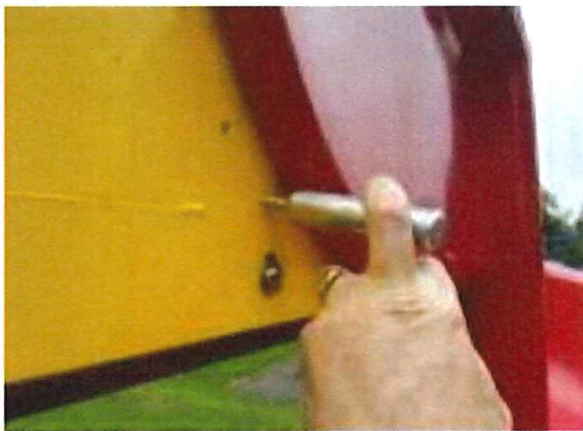
- 7 Lift and relay the mats

Risk Assessment: 2 x 3

- 8. Reinststate the surface

Risk Assessment: 2 x 3

8. Helical Slide



Surfacing:	Wet Pour
EN 1176 Compliance:	No
EN 1177 Compliance:	Yes
Manufacturer:	Not known

Comments:

1. There is/are finger entrapment(s) in the framework and the item fails to meet the requirements of BS EN 1176:2008 Part 1 4.2.7.6 Entrapment of Fingers.

2. The surfacing dimensions do not meet with the requirements of BS EN 1176 we consider this is a low risk finding.

Recommendation:

1. Monitor use

Risk Assessment: 1 x 5

2. Monitor use

Risk Assessment: 2 x 3

9. See Saw



Surfacing:	Wet pour
EN 1176 Compliance	Yes
EN 1177 Compliance	Yes
Manufacturer:	Not known

Comments:

1. The safety surfacing is damaged.
2. The paintwork on this item has been damaged or worn exposing the metal underneath.

Recommendations:

1. Repair safety surface

Risk Assessment: 2 x 4

2. treat and repaint the metalwork

Risk Assessment: 2 x 3

12. Three-way Springer



Surfacing: Wet pour
EN 1176 Compliance: Yes
EN 1177 Compliance: Yes
Manufacturer: Not known

Comments:

1. The safety surfacing is damaged
2. The paintwork on this item has been damaged or worn exposing the metal underneath which is rusting.
3. There is algae on this item.

Recommendations:

1. Monitor

Risk Assessment: 2 x 3

2. Treat and repaint the metalwork

Risk Assessment: 2 x 3

3. Remove algae and clean item

Risk Assessment: 2 x 3

